



CONSULTING ENGINEERING  
GEOSPATIAL SERVICES

ILLINOIS | SWANSEA  
WATERLOO  
EDWARDSVILLE  
PEORIA

MISSOURI | ST. CHARLES  
ST. LOUIS

TENNESSEE | NASHVILLE

**THOUVENOT, WADE  
& MOERCHEN, INC.**

WWW.TWM-INC.COM

PROF. LICENSE	NUMBER
IL. PROF. DESIGN FIRM	184-001220
IL. PROF. ENGR. CORP.	62-035370
IL. PROF. STR. ENGR. CORP.	81-005202
IL. PROF. LAND SURV. CORP.	048-000029
MO. PROF. ENGR. CORP.	001528
MO. LAND SURVEYING CORP.	000346
TN. PROF. ENGR. FIRM	8974

SEAL

SIGNATURE:  
DATE SIGNED:  
LICENSE EXPIRATION:

ISSUED FOR  
DATE OF ISSUANCE

REV.	DATE	DESCRIPTION
△		
△		
△		
△		

DRAWN BY:  
DESIGNED BY:  
CHECKED BY:  
APPROVED BY:  
PROJECT NO: E39220608

PROJECT:  
  
CITY OF LEBANON  
HUNTER STREET LIFT STATION  
REPLACEMENT

TITLE:  
  
Existing



CONSULTING ENGINEERING  
GEOSPATIAL SERVICES

ILLINOIS | SWANSEA  
WATERLOO  
EDWARDSVILLE  
PEORIA

MISSOURI | ST. CHARLES  
ST. LOUIS

TENNESSEE | NASHVILLE

**THOUVENOT, WADE  
& MOERCHEN, INC.**

WWW.TWM-INC.COM

PROF. LICENSE	NUMBER
IL. PROF. DESIGN FIRM	184-001220
IL. PROF. ENGR. CORP.	62-035370
IL. PROF. STR. ENGR. CORP.	81-005202
IL. PROF. LAND SURV. CORP.	048-000029
MO. PROF. ENGR. CORP.	001528
MO. LAND SURVEYING CORP.	000346
TN. PROF. ENGR. FIRM	8974

SEAL

SIGNATURE:  
DATE SIGNED:  
LICENSE EXPIRATION:

ISSUED FOR  
DATE OF ISSUANCE

REV.	DATE	DESCRIPTION
△		
△		
△		
△		

DRAWN BY:  
DESIGNED BY:  
CHECKED BY:  
APPROVED BY:  
PROJECT NO: E39220608

PROJECT:  
  
CITY OF LEBANON  
HUNTER STREET LIFT STATION  
REPLACEMENT

TITLE:  
  
Alternate 1



CONSULTING ENGINEERING  
GEOSPATIAL SERVICES

ILLINOIS | SWANSEA  
WATERLOO  
EDWARDSVILLE  
PEORIA

MISSOURI | ST. CHARLES  
ST. LOUIS

TENNESSEE | NASHVILLE

**THOUVENOT, WADE  
& MOERCHEN, INC.**

WWW.TWM-INC.COM

PROF. LICENSE	NUMBER
IL. PROF. DESIGN FIRM	184-001220
IL. PROF. ENGR. CORP.	62-035370
IL. PROF. STR. ENGR. CORP.	81-005202
IL. PROF. LAND SURV. CORP.	048-000029
MO. PROF. ENGR. CORP.	001528
MO. LAND SURVEYING CORP.	000346
TN. PROF. ENGR. FIRM	8974

SEAL

SIGNATURE:  
DATE SIGNED:  
LICENSE EXPIRATION:

ISSUED FOR  
DATE OF ISSUANCE

REV.	DATE	DESCRIPTION
△		
△		
△		
△		

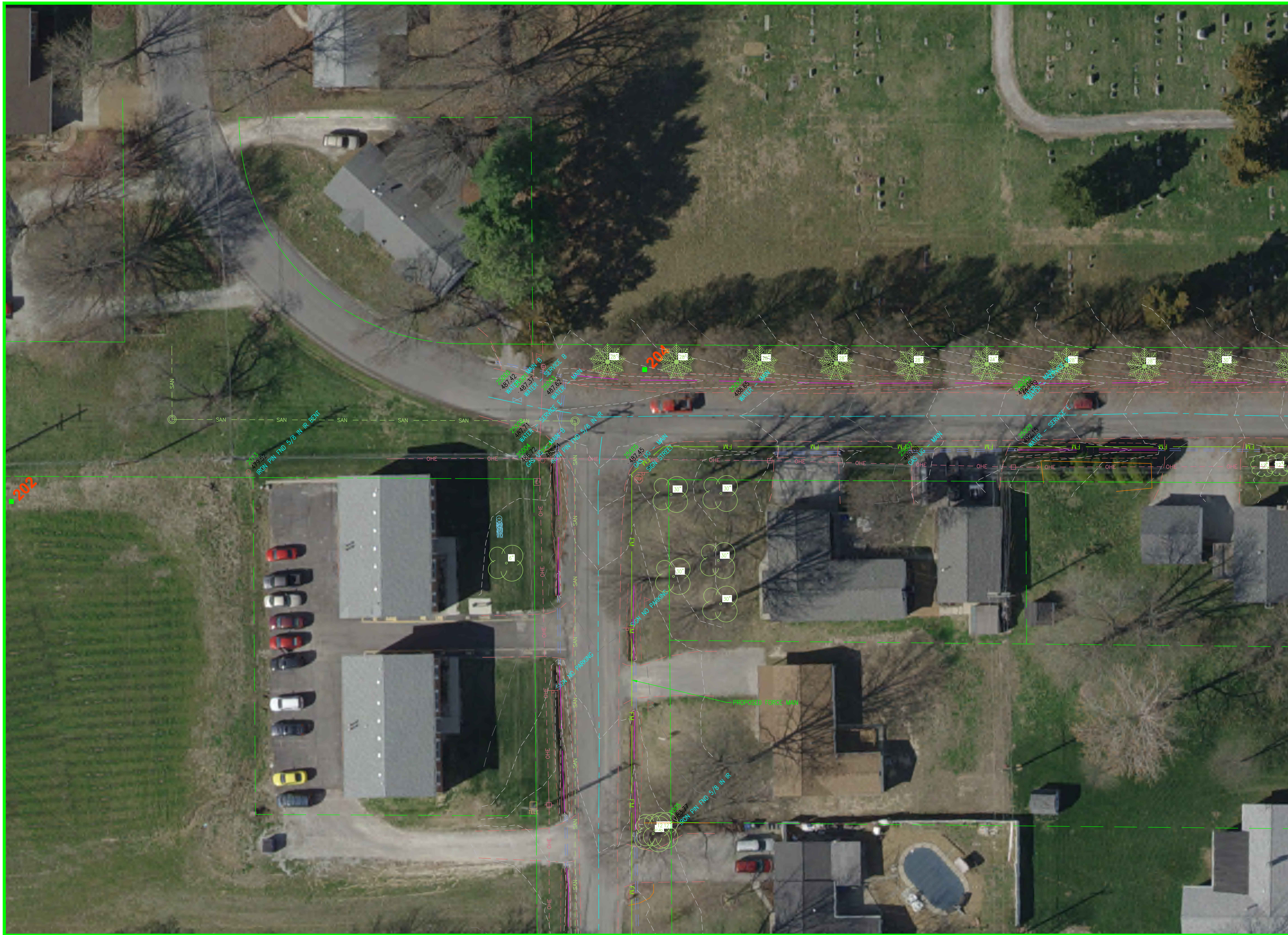
DRAWN BY:  
DESIGNED BY:  
CHECKED BY:  
APPROVED BY:  
PROJECT NO: E39220608

PROJECT:  
  
CITY OF LEBANON  
HUNTER STREET LIFT STATION  
REPLACEMENT

TITLE:  
  
Alternate 2







CONSULTING ENGINEERING  
GEOSPATIAL SERVICES

ILLINOIS | SWANSEA  
WATERLOO  
EDWARDSVILLE  
PEORIA

MISSOURI | ST. CHARLES  
ST. LOUIS

TENNESSEE | NASHVILLE

**THOUVENOT, WADE  
& MOERCHEN, INC.**

WWW.TWM-INC.COM

PROF. LICENSE	NUMBER
IL. PROF. DESIGN FIRM	184-001220
IL. PROF. ENGR. CORP.	62-035370
IL. PROF. STR. ENGR. CORP.	81-005202
IL. PROF. LAND SURV. CORP.	048-000029
MO. PROF. ENGR. CORP.	001528
MO. LAND SURVEYING CORP.	000346
TN. PROF. ENGR. FIRM	8974

SEAL

SIGNATURE:  
DATE SIGNED:  
LICENSE EXPIRATION:

ISSUED FOR  
DATE OF ISSUANCE

REV.	DATE	DESCRIPTION
△		
△		
△		
△		

DRAWN BY:  
DESIGNED BY:  
CHECKED BY:  
APPROVED BY:  
PROJECT NO: E39220608

PROJECT:  
  
CITY OF LEBANON  
HUNTER STREET LIFT STATION  
REPLACEMENT

TITLE:  
  
Force Main Routing

