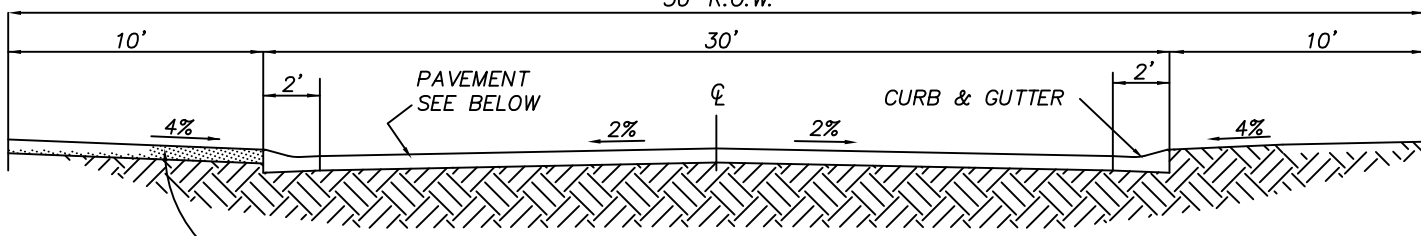
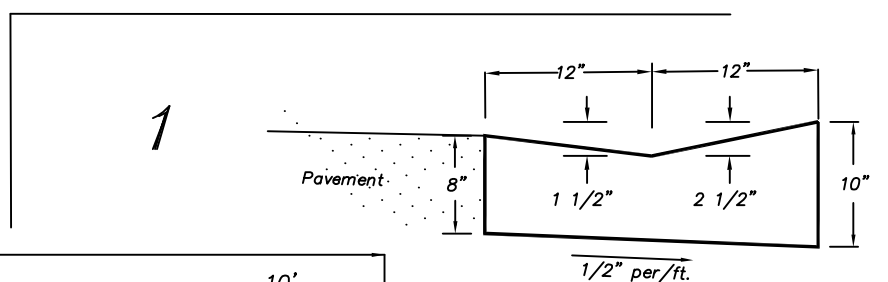
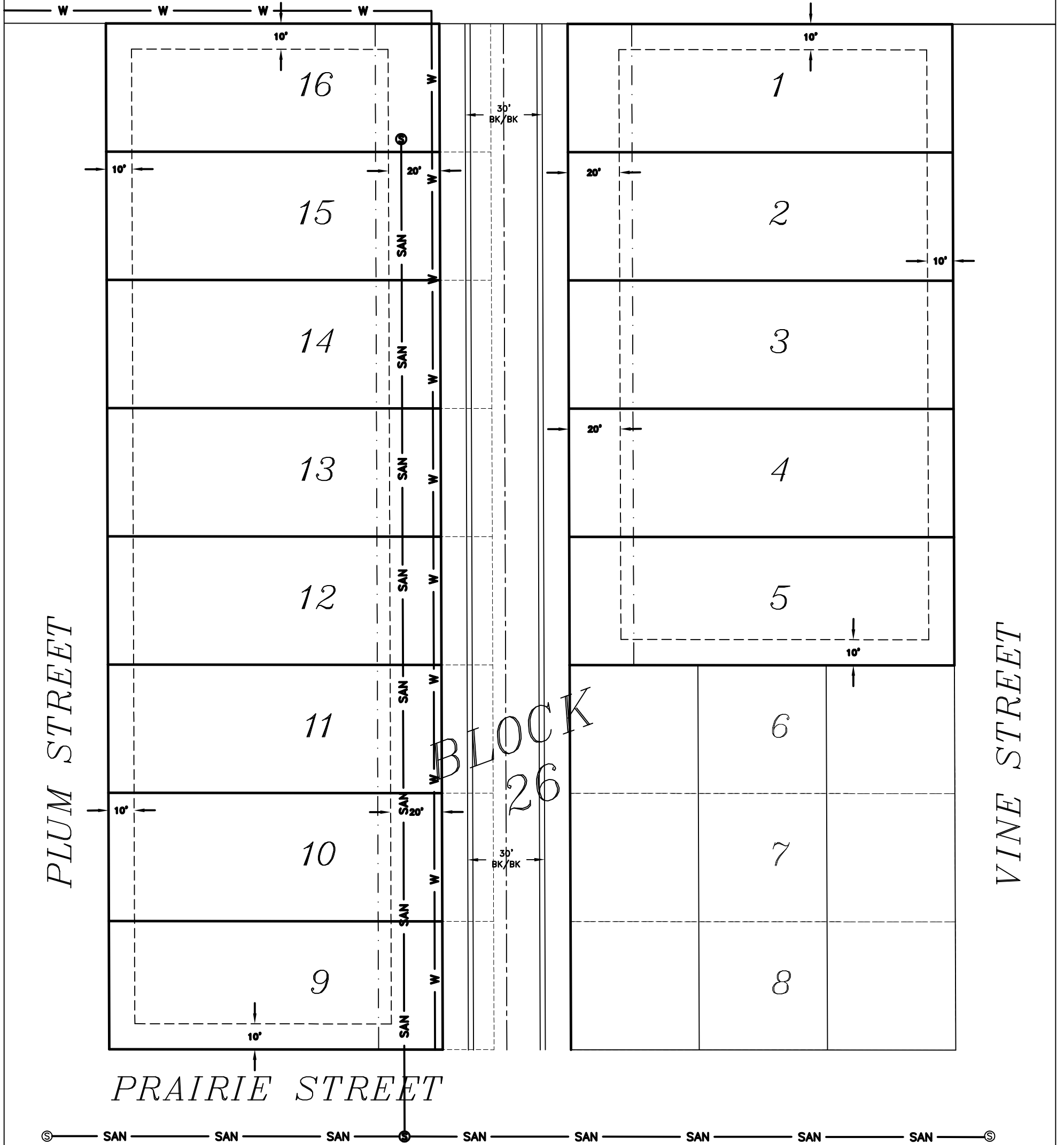


VERSION #1 - 13 LOTS

(ASSUMED)
SCALE: 1" = 40'

UNION STREET



TYPICAL CROSS SECTION
V-TYPE GUTTER
(NOT TO SCALE)

NOTE:

ROW RADII @ INTERSECTIONS = 25'
PAVEMENT RADII @ INTERSECTIONS = 25' BOC

(LOCAL STREETS)

- 50' R.O.W.
- 1-1/2" 1-11 SURFACE COURSE
- 2" 1-11 BINDER COURSE
- 4" BITUMINOUS AGGREGATE MIXTURE